

Short Report



Wasems Monastery Engelthal | ©Rüdiger Mossler

Wasems Monastery Engelthal

Edelgasse 15
55218 Ingelheim

Tel: +49 6132 2304

kloster@wasem.de
<https://www.wasem.de/de/>

Welcome!

Experience the diversity of the Engelthal Monastery. An extraordinary ambience, pure wine enjoyment and culinary delicacies await you. You will find a cozy place in the restaurant and in the summer months on the outdoor terrace. If you plan a bigger celebration like a wedding, an anniversary, a birthday, etc. the event area is presented to you gladly. Various rooms are available for conferences and workshops, equipped with the latest technology. Enjoy the special flair of the Vinothek and take advantage of the opportunity to buy wine or to taste some wines at the WASEM winery. Here your shopping becomes an experience: also open on Sundays from 12 p.m. to 5 p.m. If you would like to spend several days in Ingelheim, the WASEM wine hotel is only a few meters away from the Engelthal monastery.

TEST RESULT

for

Wasems Kloster Engelthal

55218 Ingelheim, Certificate-ID: PA-00430-2025



This offer was classified according to
the criteria of the nationwide label

»Tourism for All«

and, in the period from

June 2025 – May 2028

is entitled to use the label

»Accessibility checked«

and the associated pictograms
in accordance with the contract.

Overview

- Flexible rooms with modern conference technology for 2 to 120 people
- Wine tours and cellar tours as supplementary programs
- Versatile rooms for private parties, weddings and corporate events
- Regional and seasonal dishes in the historic Kreuzgewölbe
- Participation in the Rheingau Music Festival

Accessibility at a glance

- Parking for people with disabilities
- Stepless access to buildings
- All rooms and facilities that can be used by guests are accessible without steps or via an elevator
- 90 cm minimum width of all passageways/doors
- WC for people with disabilities
- Assistance dogs welcome

Information for people with walking difficulties and wheelchair users

All areas relevant for testing meet the quality criteria of the label "**Accessibility certified – accessible for people with walking disabilities and wheelchair users**".

Some **information on accessibility** are listed below. For detailed information please see the evaluation report.

- There are two parking spaces for people with disabilities.
- All rooms and facilities that can be used by guests and are raised are accessible without steps/at ground level or via an elevator.
- All doors/passages that can be used by guests and are raised are at least 90 cm wide.
- There are tables in the restaurant that are max. 80 cm high and wheelchair compatible at a height of 67 cm and a depth of 30 cm.
- There are two public WCs for people with disabilities, which can be accessed from both sides (at least 90 cm). The grab rails on the WC can be flipped-up.

Information for people with hearing impairments and deaf people

Some **information on accessibility** are listed below. For detailed information please see the evaluation report.

- There is no audio induction loop system.
- There is no alarm.
- An outgoing emergency call in the elevator is confirmed audibly.
- In the restaurant there are tables with bright and glare-free lighting, on which there are no lamps standing or hanging that interfere with the field of vision or eye contact. There is a seating area with low background noises (e.g. corner seating, separate room).

Information for visually impaired and blind people

Some **information on accessibility** are listed below. For detailed information please see the evaluation report.

- Assistance dogs are welcome.
- The signage (for orientation) is designed in easily legible and high-contrast lettering.
- All elevated areas that can be used by guests are brightly lit and glare-free.
- An outgoing emergency call in the elevator is confirmed acoustically.
- Steps have no high-contrast edges.
- Stairs have handrails on both sides.
- The lettering on the menu is uncluttered and visually rich in contrast.
- Information is not available in Braille or prismatic writing.

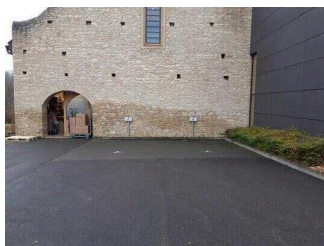
Information for guests with cognitive impairments

Some **information on accessibility** are listed below. For detailed information please see the evaluation report.

- The name of the monastery is clearly recognizable from the outside.
- Information for orientation is partly available with pictograms.
- There is no information in easy language.

Image Gallery

We have put together some photos from the company / offer for you. You can find more photos in the detailed reports.



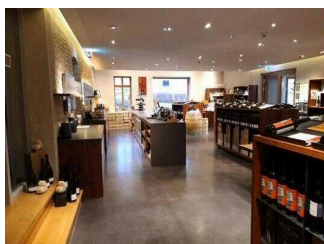
Parking lot for people with disabilities

©Julia Marmulla



Main entrance (level 2)

©Julia Marmulla



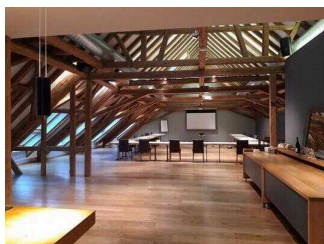
Vinotheque (Level 2)

©Julia Marmulla



Event rooms (level 3+4)

©Julia Marmulla



Event rooms (level 3+4)

©Julia Marmulla



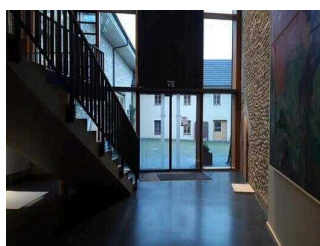
Event rooms (level 3+4)

©Julia Marmulla



Event rooms (level 3+4)

©Julia Marmulla



Exit to the courtyard (level 0)

©Julia Marmulla



Exit to the courtyard (level 0)

©Julia Marmulla



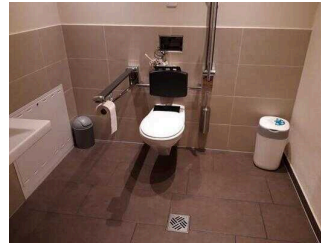
Entrance to the restaurant (level 0)

©Julia Marmulla



Rastaurant

©Julia Marmulla



WC for people with disabilities in the restaurant

©Julia Marmulla

Information on the "Tourism for All" labeling system

All establishments and locations certified with the label "Tourism for All" meet the following quality criteria:

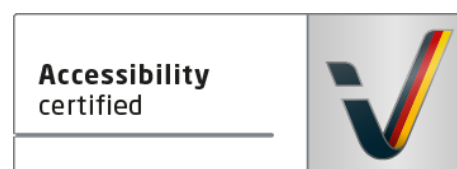
- Data and information on accessibility are collected and checked on site by **external, specially trained evaluators**. The method is not based on self-assessments.
- Data on accessibility is available **in detail** and can be viewed by the guests.
- At least one staff member has successfully passed a **training** on "**Accessibility as a comfort and quality feature**".

The labeling – explanation of the logos and pictograms

The label "**Information about Accessibility**" indicates that detailed and verified information on accessibility is available for all groups of people.



The label "**Accessibility certified**" is based on "Information about Accessibility". It means that the quality criteria defined for specific groups of people are met partially or completely.



The label "**Accessibility certified**" is available in two requirement levels:

"Accessibility certified: partially accessible".

The quality criteria are partially fulfilled for the pictured group of people, i.e. the establishment/location is partially accessible for wheelchair users. The "i" in the pictogram indicates that it is recommended to read again carefully whether the offer meets all (your oder the guest's) individual requirements.



"Accessibility certified: accessible".

The quality criteria are fulfilled for the pictured group of people, i.e. the establishment/location is accessible for wheelchair users.



There are defined quality criteria for **seven groups of people** and a **specific pictogram** for each group.

People with walking disabilities



Wheelchair users



People with hearing impairment



Deaf people



People with visual impairments



Blind people



People with cognitive impairments

